

NATURAL. HEALING.



# BellaDerm<sup>®</sup>

*ACELLULAR HYDRATED DERMIS*



BellaDerm<sup>®</sup> Acellular Hydrated Dermis

**Natural**

like native tissue<sup>1,2,3</sup>

**Unique**

minimally processed<sup>4</sup>

**Innovative**

both strong and flexible<sup>5</sup>

# NATURAL. HEALING. UNIQUE PROCESS

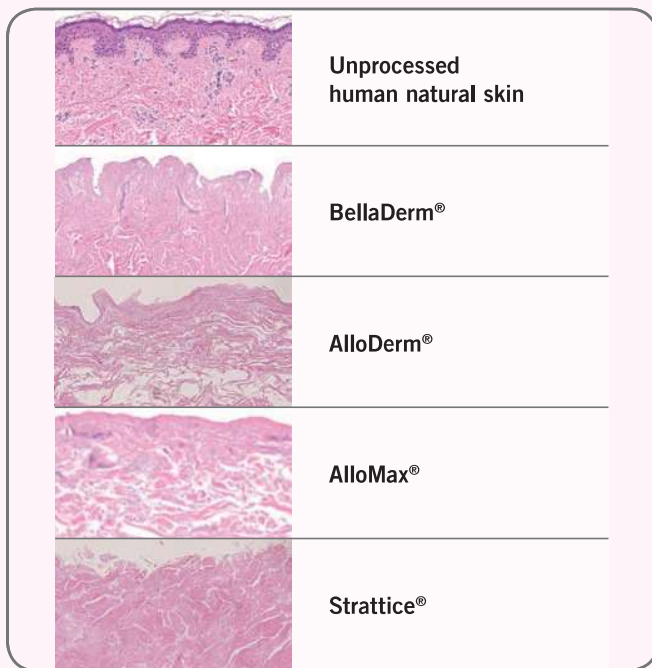
Process protected by US Patent 7,723,108.

BellaDerm® has unique processing that does not impact human skin properties.

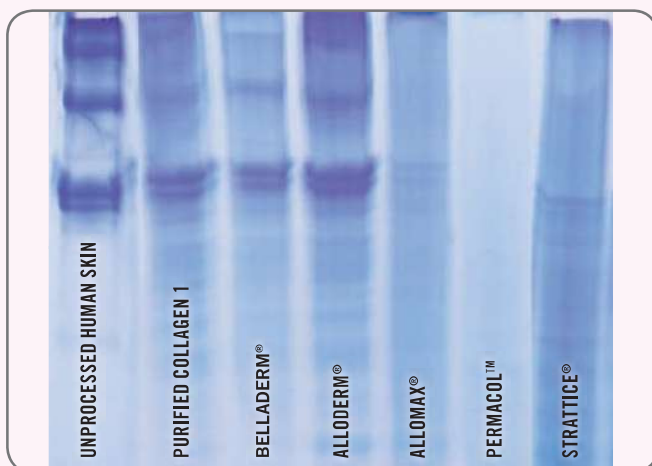
BellaDerm®	Other Matrices <sup>7-11</sup>
<ul style="list-style-type: none"> <li>high concentration sodium chloride</li> <li>non-ionic detergent</li> <li>peracetic acid</li> </ul>	<ul style="list-style-type: none"> <li>acetone</li> <li>lyophilization</li> <li>gamma irradiation</li> <li>e-beam sterilization</li> </ul>

## MATRIX THAT IS CLOSEST TO NATURAL HUMAN TISSUE

BellaDerm® retains the architectural elements of human unprocessed skin, allowing natural healing.<sup>3,12</sup>

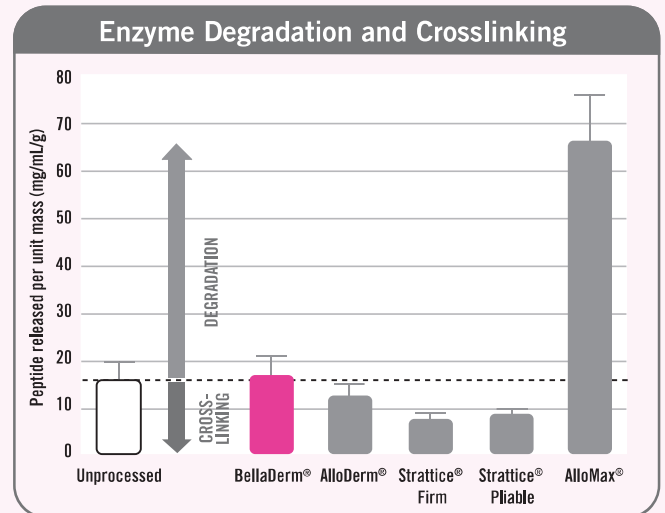


Minimal processing of BellaDerm® maintains the natural characteristics of collagen.<sup>1</sup>



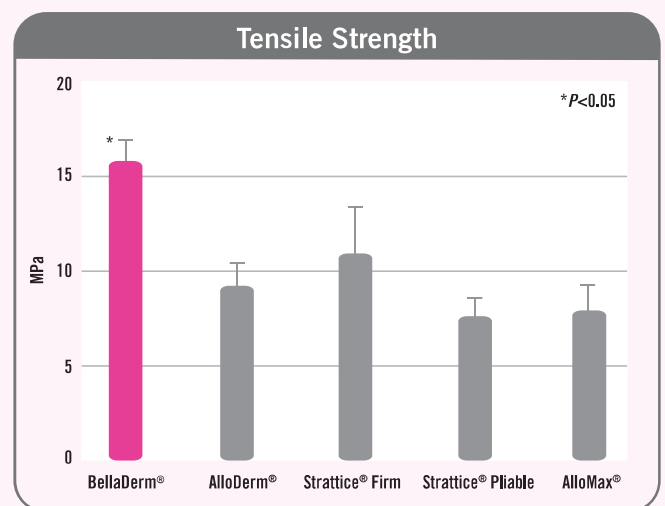
Collagen proteins separated by molecular weight through sodium dodecyl sulfate polyacrylamide gel electrophoresis (SDS-PAGE). Smaller, degraded proteins migrate lower in the gel, whereas larger, crosslinked proteins remain higher in the gel. Collagen in BellaDerm® is similar to unprocessed human skin.

BellaDerm® is most similar to unprocessed human tissue.<sup>2</sup>

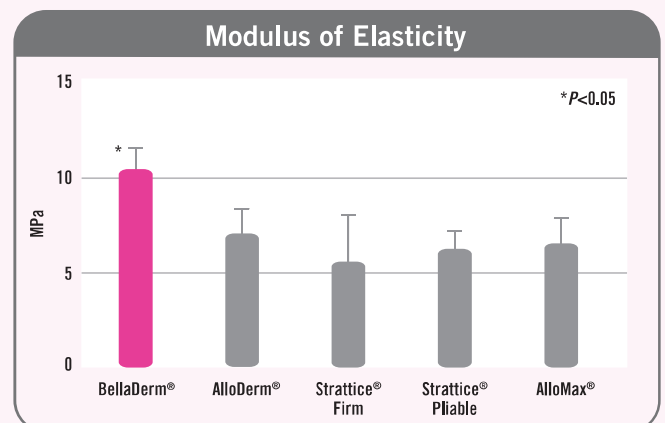


## INNOVATIVE: STRONG AND FLEXIBLE

BellaDerm® has the greatest tensile strength of all leading matrices.<sup>5</sup>



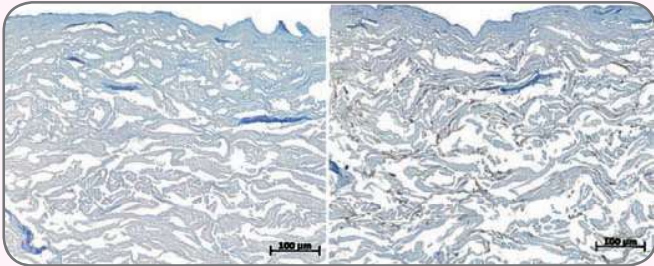
BellaDerm® stands out with natural memory to resist excessive stretching.<sup>5</sup>



## NATURAL. HEALING. INTEGRATION WITH NATIVE TISSUE

BellaDerm® has natural components and architecture that support cellular infiltration and revascularization.

Hyaluronan is present in all living organisms and provides matrix structure, osmotic balance and assists with cell migration and differentiation. Vitronectin, an adhesive glycoprotein, binds to collagen and promotes cell attachment, proliferation, and differentiation. Both hyaluronan and vitronectin are found in BellaDerm®.<sup>3</sup>



Left: Immunohistochemical staining using Alcian Blue/PAS shows the presence of hyaluronan in BellaDerm® as indicated by indigo staining.

Right: Immunohistochemical staining shows vitronectin in BellaDerm® as indicated by brown staining. Histology courtesy of Premier Laboratory, LLC.

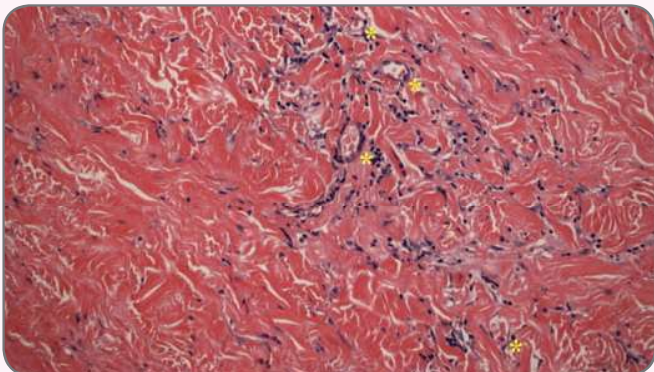
BellaDerm® shows healthy revascularization after 8 weeks, without adhesions to internal organs.<sup>13</sup>



Rabbit abdominal wall

Clinical evidence of BellaDerm® integration.

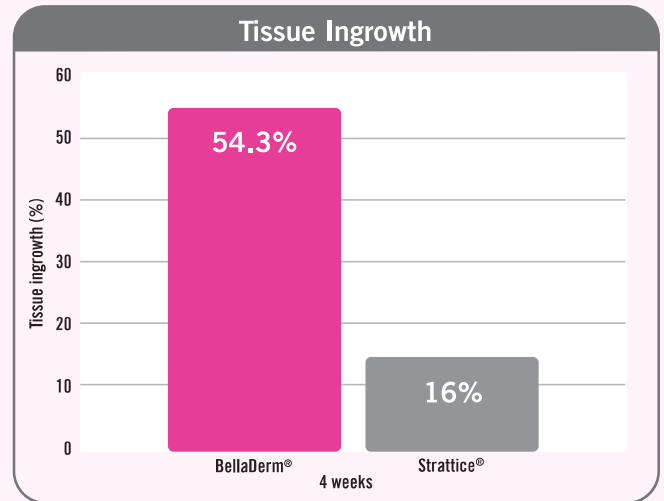
Shown here at 3 months after placement in patient.



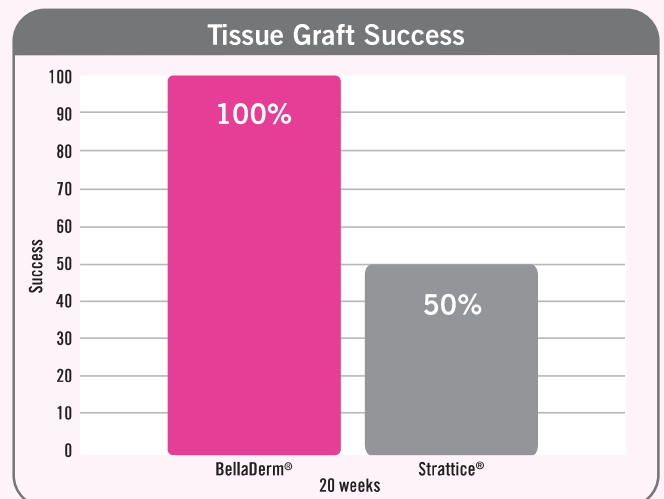
BellaDerm® is visibly (40x magnification) populated with fibroblasts, indicating integration of the dermal matrix into soft tissues. Numerous red blood cells are also apparent in blood vessels within BellaDerm®, demonstrating neovascularization. Images courtesy of Dr. John Y.S. Kim.

## PROVEN PERFORMANCE

BellaDerm® shows 3x greater tissue ingrowth than Strattice® in preclinical study.<sup>13</sup>



BellaDerm® outperforms Strattice® in preclinical study.<sup>13</sup>



Preclinical studies indicate 50% graft resorption and thinning resulting in hernia defect or recurrence with Strattice®.<sup>13</sup>

### BELLADERM® IS A NATURAL ALLOGRAFT OPTION FOR YOUR SURGICAL PROCEDURES.

Developed by MTF, BellaDerm® is ready-to-use and easy-to-handle, making it an ideal choice for surgeons. And since its unique acellular matrix is derived from donated human skin, your patients will appreciate the generous gesture...and the naturally beautiful results.

# NATURAL. HEALING.

## STRINGENT QUALITY AND SAFETY STANDARDS.

BellaDerm® is available through the Musculoskeletal Transplant Foundation (MTF).

- MTF adheres to quality and safety standards developed by leading physicians, transplant surgeons, and specialists in the fields of science and medicine
- Donor screening criteria are among the most stringent of any tissue bank
- MTF meets or exceeds the standards and regulations of the American Association of Tissue Banks (AATB) and the Food and Drug Administration (FDA)

### References

1. Choi B. (Report) LE-284: Characterization of Acellular Dermis via SDS-PAGE. February 20, 2010.
2. Choi B. (Report) LE-282: Analysis of Extracellular Matrix (ECM) Characteristics via Enzyme Degradation Assay. February 20, 2010.
3. Ngo, MD. (Report) LE-268: Extracellular Matrix Components in Acellular Dermis. December 22, 2009.
4. Vaynshteyn E, Ngo MD, Munoz M, et al. Process Validation Report, PV-147, Sterilization of Acellular Dermis: July 19, 2005:1-16.
5. Choi B. (Report) LE-271: Analysis of Tensile Testing Data of Acellular Dermis. February 20, 2010.
6. Musculoskeletal Transplant Foundation. Processing Dermis (Skin).
7. Ramshaw B and Bachman S, Surgical materials for ventral hernia repair, Biologic mesh, Part 2 of 3. *General Surgery News*, February 2007:1-14.
8. Livesey SA, del Campo AA, Nag A, et al. United States Patent Number 5,336,616. August 9, 1994.
9. Hammond TM, Chin-Aleong J, Navsaria H, Williams NS. Human in vivo cellular response to a cross-linked acellular collagen implant. *Br J Surg*. 2008;95(4):438-446.
10. Freytes DO, Badylak SF. Sterilization of biologic scaffold materials. In: Webster JG, ed. *Encyclopedia of Medical Devices and Instrumentation*, 2nd ed. John Wiley & Sons, Inc; 2006:1-13.
11. Grimes M, Pembroke JT, McCloughlin T. The effect of choice of sterilization method on the biocompatibility and biodegradability of SIS (small intestinal submucosa). *Biomed Mater Eng*. 2005;15(1-2):65-71.
12. Data on file.
13. Ngo MD, Aberman HM, Hawes ML, Choi B, Gertzman AA. Evaluation of human acellular dermis versus porcine acellular dermis in an in vivo model for incisional hernia repair. *Cell Tissue Bank*. In press.

### Other Clinical and Preclinical References

- Buck DW 2nd, Heyer K, Dibardino D, Bethke K, Kim JY. Acellular dermis-assisted breast reconstruction with the use of crescentic tissue expansion: a functional cosmetic analysis of 40 consecutive patients. *Aesthet Surg J*. 2010;30(2):194-200.
- Eberli D, Rodriguez S, Atala A, Yoo JJ. In vivo evaluation of acellular human dermis for abdominal wall repair. *J Biomed Mater Res A*. 2010;93(4):1527-1538.
- Gocke DJ. Tissue donor selection and safety. *Clin Orthop Relat Res*. 2005;(435):17-21.
- Louie L. The use of ALLODERM versus BellaDerm in implant based breast reconstruction. *Plast and Reconstr Surg*. June 2010 Supplement.
- Maxwell GP, Gabriel A. Use of the acellular dermal matrix in revisionary aesthetic breast surgery. *Aesthet Surg J*. 2009;29(6):485-493.
- Ngo M, Gertzman A. Acellular dermis for use in reconstructive surgery. Presented at: Biologic Scaffolds for Regenerative Medicine 5th Symposium, Phoenix, Arizona, February 15-16, 2008.
- Roth JS, Dexter DD, Lumpkins K, Bochicchio GV. Hydrated vs. freeze-dried human acellular dermal matrix for hernia repair: a comparison in a rabbit model. *Hernia*. 2009;13(2):201-207.
- Topol BM, Dalton EF, Ponn T, Campbell CJ. Immediate single-stage breast reconstruction using implants and human acellular dermal tissue matrix with adjustment of the lower pole of the breast to reduce unwanted lift. *Ann Plast Surg*. 2008;61(5):494-499.

Musculoskeletal Transplant Foundation  
1-800-433-6576

2011  
ALLOGRAFT TISSUE

Tissue Code	Description	Thickness	Process
<b>Acellular Dermal Grafts</b>			
<i>Thin</i>			
280102	BellaDerm, 1 cm x 2 cm	0.4 mm - 0.8 mm thick	Hydrated
280204	BellaDerm, 2 cm x 4 cm	0.4 mm - 0.8 mm thick	Hydrated
280304	BellaDerm, 3 cm x 4 cm	0.4 mm - 0.8 mm thick	Hydrated
280307	BellaDerm, 3 cm x 7 cm	0.4 mm - 0.8 mm thick	Hydrated
280407	BellaDerm, 4 cm x 7 cm	0.4 mm - 0.8 mm thick	Hydrated
280412	BellaDerm, 4 cm x 12 cm	0.4 mm - 0.8 mm thick	Hydrated
280416	BellaDerm, 4 cm x 16 cm	0.4 mm - 0.8 mm thick	Hydrated
280616	BellaDerm, 6 cm x 16 cm	0.4 mm - 0.8 mm thick	Hydrated
280816	BellaDerm, 8 cm x 16 cm	0.4 mm - 0.8 mm thick	Hydrated
<i>Thick</i>			
281102	BellaDerm, 1 cm x 2 cm	0.8 mm - 1.7 mm thick	Hydrated
281104	BellaDerm, 1 cm x 4 cm	0.8 mm - 1.7 mm thick	Hydrated
281204	BellaDerm, 2 cm x 4 cm	0.8 mm - 1.7 mm thick	Hydrated
281304	BellaDerm, 3 cm x 4 cm	0.8 mm - 1.7 mm thick	Hydrated
281207	BellaDerm, 2 cm x 7 cm	0.8 mm - 1.7 mm thick	Hydrated
281307	BellaDerm, 3 cm x 7 cm	0.8 mm - 1.7 mm thick	Hydrated
281407	BellaDerm, 4 cm x 7 cm	0.8 mm - 1.7 mm thick	Hydrated
281608	BellaDerm, 6 cm x 8 cm	0.8 mm - 1.7 mm thick	Hydrated
281510	BellaDerm, 5 cm x 10 cm	0.8 mm - 1.7 mm thick	Hydrated
281212	BellaDerm, 2 cm x 12 cm	0.8 mm - 1.7 mm thick	Hydrated
281312	BellaDerm, 3 cm x 12 cm	0.8 mm - 1.7 mm thick	Hydrated
281412	BellaDerm, 4 cm x 12 cm	0.8 mm - 1.7 mm thick	Hydrated
281512	BellaDerm, 5 cm x 12 cm	0.8 mm - 1.7 mm thick	Hydrated
281612	BellaDerm, 6 cm x 12 cm	0.8 mm - 1.7 mm thick	Hydrated
281416	BellaDerm, 4 cm x 16 cm	0.8 mm - 1.7 mm thick	Hydrated
281616	BellaDerm, 6 cm x 16 cm	0.8 mm - 1.7 mm thick	Hydrated
281816	BellaDerm, 8 cm x 16 cm	0.8 mm - 1.7 mm thick	Hydrated
<i>Ultra Thick</i>			
282104	BellaDerm, 1 cm x 4 cm	≥1.8 mm thick	Hydrated
282304	BellaDerm, 3 cm x 4 cm	≥1.8 mm thick	Hydrated
282510	BellaDerm, 5 cm x 10 cm	≥1.8 mm thick	Hydrated
282312	BellaDerm, 3 cm x 12 cm	≥1.8 mm thick	Hydrated
282412	BellaDerm, 4 cm x 12 cm	≥1.8 mm thick	Hydrated
282512	BellaDerm, 5 cm x 12 cm	≥1.8 mm thick	Hydrated
282612	BellaDerm, 6 cm x 12 cm	≥1.8 mm thick	Hydrated
282514	BellaDerm, 5 cm x 14 cm	≥1.8 mm thick	Hydrated
282416	BellaDerm, 4 cm x 16 cm	≥1.8 mm thick	Hydrated
282616	BellaDerm, 6 cm x 16 cm	≥1.8 mm thick	Hydrated
<i>Breast Kits - 2 Units, Thin</i>			
2B0412	BellaDerm, 4 cm x 12 cm	0.4 mm - 0.8 mm thick	Hydrated
2B0416	BellaDerm, 4 cm x 16 cm	0.4 mm - 0.8 mm thick	Hydrated
2B0616	BellaDerm, 6 cm x 16 cm	0.4 mm - 0.8 mm thick	Hydrated
2B0816	BellaDerm, 8 cm x 16 cm	0.4 mm - 0.8 mm thick	Hydrated
<i>Breast Kits - 2 Units, Thick</i>			
2B1412	BellaDerm, 4 cm x 12 cm	0.8 mm - 1.7 mm thick	Hydrated
2B1416	BellaDerm, 4 cm x 16 cm	0.8 mm - 1.7 mm thick	Hydrated
2B1616	BellaDerm, 6 cm x 16 cm	0.8 mm - 1.7 mm thick	Hydrated
2B1816	BellaDerm, 8 cm x 16 cm	0.8 mm - 1.7 mm thick	Hydrated

The Musculoskeletal Transplant Foundation maintains an unrivaled safety record with over 4.2 million grafts distributed since 1987.<sup>1,2</sup>

Contact MTF Customer Service at 1-800-433-6576.