

mtfbiologics

Prime
DBM™ | HD



We Save and Heal Lives.

PRIME HD – KEY F&B'S

Feature	Benefit	Key Differentiator?
Superior Handling	Cohesive and moldable allowing the graft to be formed into any shape and conform to any defect geometry without the loss of graft material	Yes ... Other DBM's such as Grafton Putty are not as cohesive which leads to more graft loss during manipulation, placement and irrigation
Aseptically processed	Better preserves endogenous, osteoinductive growth factors	Yes ... Almost all other DBM's are terminally sterilized leading to a reduction of growth factor activity... MTF OI scores higher than Grafton, Lifenet and Biomet
Resistant to irrigation	Highly cohesive which prevents loss of material during irrigation	Yes ... Other DBM's such as Grafton are not as cohesive and may separate upon irrigation
Can be combined with fluids	Allows biologic enhancement from BMA to be added and can also be squeezed to remove excess fluid without impairing handling characteristics	Yes ... almost all DBM's on the market either separate when fluid is added or resist fluid due to the use of a viscous carrier. Once the carrier is diluted, the handling properties can no longer be restored
High OI	Consistently strong osteoinductive potential that can lead to more rapid or robust bone healing	Yes ... MTF studies have shown that our processing methods lead to higher OI scores when compared to the competition
Lot Testing for OI	Verified capacity for eliciting new bone formation for every donor batch	Yes... OI is not tested for every lot of Grafton. Grafton relies on a validation to support their OI claim.
Prehydrated & ready to use	No OR preparation required	Maybe ... some DBM's like Osteoamp need to be mixed prior to use

PRIME HD – INDICATIONS FOR USE

- **Indications for Use**
 - Prime HD is intended for use in the repair, reconstruction, replacement or supplementation of host bone which may occur as the result of damage, injury, surgical procedure or naturally occurring defects in the recipient. Prime HD is indicated for filling or augmenting bony voids or gaps within the skeleton, including extremities, cranium, and spinal column; and augmentation for posterior lateral fusions in the spinal column.



PRIME HD – PRICING

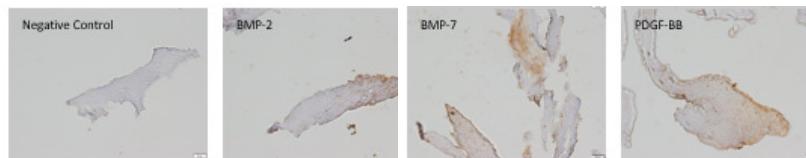


Tissue Code	Tissue Description	Service Fee					
421005	Prime HD DBM, 0.5CC	\$XXXXX					
421010	Prime HD DBM, 1.0CC	\$XXXXX					
421025	Prime HD DBM, 2.5CC	\$XXXXX					
421050	Prime HD DBM, 5.0CC	\$XXXXX					
421100	Prime HD DBM, 10CC	\$XXXXX					



PRIME HD – LAUNCH

- Launch Target – June 1 rollout
- Marketing Collaterals
 - Brochure & 5 CC Samples
 - White Papers
 - Evidence of OI through the detection of growth factors (BMP-2, BMP-7 and PDGF-BB) – Confirms these essential growth factors for OI are present after MTF’s careful aseptic processing methods
 - Comparative mouse OI results vs. other DBMs – Confirms that Prime HD has Osteoinductive properties better than other DBM’s on the market



Prime DBM[®] | HD

A SUPERIOR HANDLING DBM THAT'S READY TO USE.

mtfbiologics
Orthopedics



Any Questions?

JEROME_BRIDGEMAN@MTF.ORG